

# BRASS ALUMINIUM

Extruding And Shaping Your World



**BRASS ALUMINIUM LTD CO.**



BRASS ALUMINIUM LTD CO.

# BRASS ALUMINIUM

Extruding And Shaping Your World

The **Brass Aluminium** is one of the leading company groups in the aluminium industry.

We develop and produce technologically sophisticated extruded profiles and mechanically processed products from aluminium, which we deliver to our customers from the construction, transport, automotive, machine, shading systems and industry sectors. In doing so, we cover the complete value-added chain with our production processes, from raw material to end product.

With in-house remelting capacity, six extrusion lines, state of the art fabrication, three anodising systems and a powder coating system, **Brass** covers a wide spectrum of competences.

We produce our aluminium using the latest technology and with care for the environment.

The advantages at a glance:

- Highly extensive engineering expertise in the processing of aluminium
- Attractive delivery times with maximum flexibility in processing
- Products produced in an environmentally-friendly manner from one source
- Products that comply with the highest quality, environmental and social standards

## PRODUCTION PLANT OF BRASS ALUMINIUM

- EXTRUSION LINE
- ANODISING

# BRASS ALUMINIUM

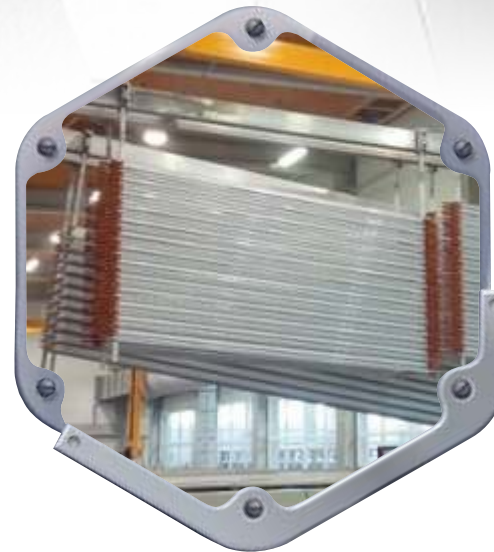
*We complete the entire aluminium production cycle*



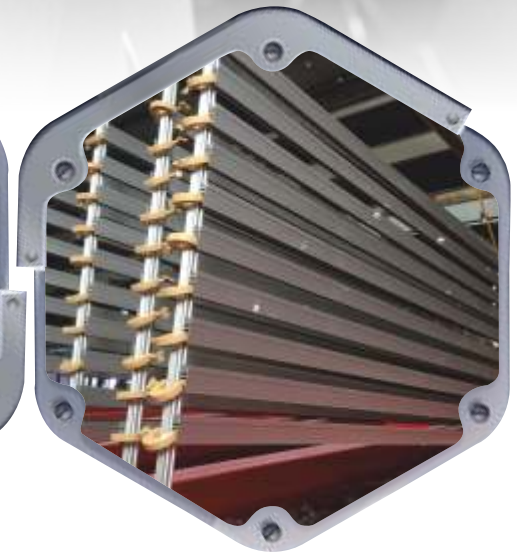
**EXTRUSION  
LINE**



**EXTRUSION  
LINE**



**ANODISING**



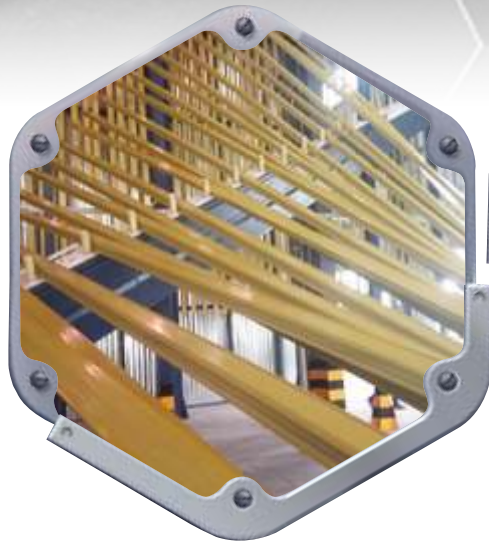
**ANODISING**

## PRODUCTION PLANT OF BRASS ALUMINIUM

- POWDER COATING
- MECHANICAL WORKS

# BRASS ALUMINIUM

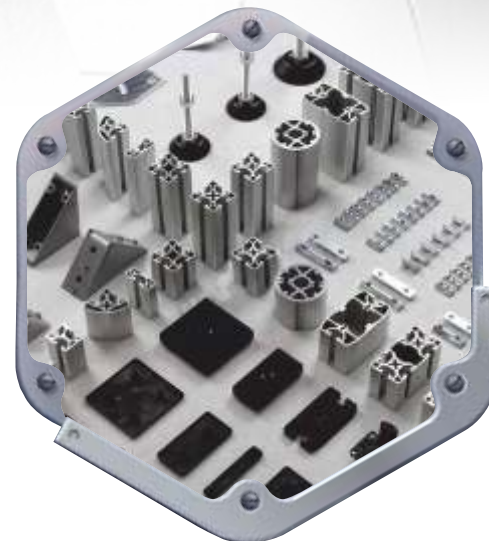
*We complete the entire aluminium production cycle*



**POWDER  
COATING**



**POWDER  
COATING**



**MECHANICAL  
WORKS**



**MECHANICAL  
WORKS**

# BRASS ALUMINIUM

We complete the entire aluminium production cycle

We produce high-value industrial aluminum components for the most demanding market segments.

We have all the production processes, from extrusion to recycling through painting, anodizing, bending, machining or stamping.

This allows us to offer sustainable products, totally finished and adapted to the needs of each client.

## **INDUSTRIES**

Renewable Energy Industry

Electrical, Electronics & Telecommunications Industry

Shop Equipment Industry

Sports Equipment Industry

Transportation Industry

Lighting Industry

Building Industry

Heating & Cooling Industry

Domestic Appliance Industry

Military Industry

Petrochemical & Refinery Industry

Medical Industry

Printing & Advertising Industry

Agricultural & Greenhouse Industry



# BRASS ALUMINIUM



**ELECTRICAL, ELECTRONICS & TELECOMMUNICATIONS INDUSTRY**



**BUILDING INDUSTRY**



**LIGHTING INDUSTRY**



**MEDICAL INDUSTRY**



**RENEWABLE ENERGY INDUSTRY**



**AGRICULTURAL & GREENHOUSE INDUSTRY**



**PETROCHEMICAL & REFINERY INDUSTRY**

# BRASS ALUMINIUM



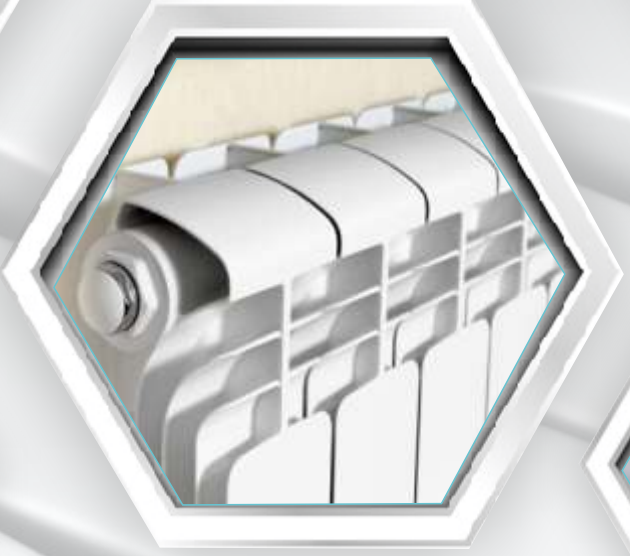
**PRINTING & ADVERTISING INDUSTRY**



**DOMESTIC APPLIANCE INDUSTRY**



**SHOP EQUIPMENT INDUSTRY**



**HEATING & COOLING INDUSTRY**



**TRANSPORTATION INDUSTRY**



**MILITARY INDUSTRY**



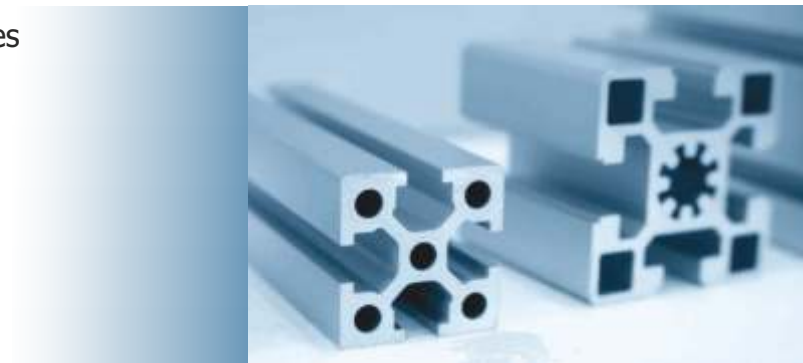
**SPORTS EQUIPMENT INDUSTRY**

# BRASS ALUMINIUM

We are a world leader in the production of sustain able, fully finished aluminum components for a multitude of industrial sectors. Our unique technical and production capabilities enable us tooffer high-value profiles tailored toeach customer's needs.

## PRODUCTS

- Shading System Profiles
- Standard Profiles
- Aluminium Cabinet Profiles
- Aluminium Ceiling False Profiles
- Aluminium door and window Profiles
- Aluminium fence and hand rail profiles
- Aluminium Louvre Profiles
- Aluminium Partition Profiles
- Aluminium Profiles cutseam
- Aluminium Rail Profiles
- Aluminium Shower Cabin Profiles
- Aluminium Shutter Profiles
- Automatic Door Aluminium Profiles
- Composite Facade Aluminium Profiles
- Cornice Profiles
- Curtin Wall Aluminium Profiles
- Dry View Aluminium Profiles
- Elevator Aluminium Profiles
- Frameless Aluminium Profiles
- Handle Profiles
- Pasar Aluminium Profiles
- Regal Profiles
- Removable Roof Aluminium Profiles
- Zebra Curtain Aluminium Profiles
- Aluminium Air Conditioner Profiles
- Aluminium Heatsink
- Aluminium Motor Shell
- Aluminium Profiles of Vehicles
- Domestic Appliance Profiles
- Grooved Aluminium Profiles
- Lihtbox Aluminium Profiles
- Linear Led Aluminium Profiles
- Medical Equipment Aluminium Profiles
- Refrigerator and Industrial Refrigerators Profiles
- Solar Panel Aluminium Profiles
- White Board Aluminium Profiles
- Aluminium Belt Profiles
- Aluminium Can Profiles
- Aluminium Corner
- Aluminium Fish Pollen Profiles
- Aluminium Fixer
- Aluminium Rebar Profiles
- Aluminium Shield Profiles
- Aluminium Stud Profiles
- Aluminium Tube Profiles



**BRASS ALUMINIUM LTD CO.**



# SHADING SYSTEMS BY BRASS ALUMINIUM

**BRASS's** shading systems can be used in residential living spaces as well as in hotel or commercial facilities, enabling perfect integration in any architectural setting. Our range of solar shading systems offers not only better living conditions, but also energy savings, especially during summer, thanks to the reduction of energy needed for air conditioning.



# BRASS ALUMINIUM

## RETRACTABLE FABRIC PERGOLA

Fully Automatic Retractable Sliding Folding

Outdoor Pergola Waterproof

Aluminum Terrace Roof for Arbours Arches & Bridges



# BRASS ALUMINIUM

## BIOCLIMATIC PERGOLA

Bioclimatic Pergola Systems, also known as rolling roof, retractable roof, rolling terrace, or folding terrace, are designed to enhance your outdoor experience in the most enjoyable way. Ideal for use in any environment, This system offers three different bio-climate options: Fully closed, ventilation mode, fully open. Different modulation options that can be determined according to the needs of any space.



# BRASS ALUMINIUM

## WINTER GARDEN

Wintergarden glass extension has high levels of thermal efficiency, with low U-values, which allow it to be used all year round and become part of your everyday living space, even in the coldest weather.

- Glazing options with sound insulation, sun protection, burglar-resistance and self-cleaning features
- Optional blinds or powered awning, sun & rain protection, climate controlled features.
- A Wintergarden glass extension expansive, barrier-free access to the garden



# BRASS ALUMINIUM

## GUILLOTINE SYSTEMS

This innovative product offers smooth and effortless operation, allowing you to control light and ventilation with ease. Crafted with precision, these windows become a statement piece in your space, combining functionality and aesthetics seamlessly.



# BRASS ALUMINIUM

*We ensure high product quality, timely order fulfillment, competitive prices, and professional service to whole world.*



Address : Fatih Cd. No: 28/4 Merter / Gungoren -Istanbul / Turkey



Factory : South C1 Street-Plot 7. Phase 2. Aras Free Zone. Brass Aluminium Group



For order : [export@brassaluminium.com](mailto:export@brassaluminium.com)

[www.brassaluminium.com](http://www.brassaluminium.com)